

DESIGN NOTES

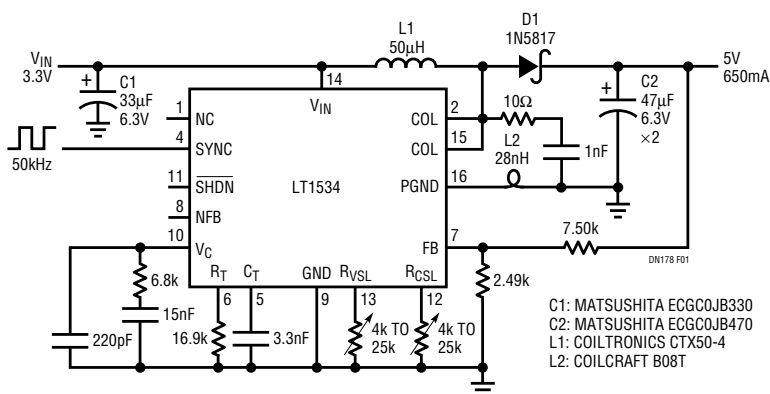
Jeff Witt

The LT[®]1534 ultralow noise switching regulator provides an effective and flexible solution to this problem. Using two external resistors, the user can program the slew rates of the current through the internal 2A power switch and the voltage on it. Noise performance can be evaluated and improved with the circuit operating in the final system. The system designer need sacrifice only as much efficiency as is necessary to meet the required noise performance. With the controlled slew rates, system performance is less

The LT1534's internal oscillator can be programmed over a broad frequency range (20kHz to 250kHz) with good initial accuracy. It can also be synchronized to an external signal placing the switching frequency and its harmonics away from sensitive system frequencies.

In Figure 1, the LT1534 boosts 3.3V to supply 650mA at 5V with its oscillator synchronized to an external 50kHz clock. The circuit relies on the low ESR of capacitor C2 to keep the output ripple low at the fundamental frequency; slew rate control reduces the high frequency ripple. Figure 2 shows waveforms of the circuit as it delivers 500mA. The top trace shows the voltage on the collector of the internal bipolar power switch (the COL pins), and the middle trace shows the switch current. The lowest trace is the output ripple. The slew rates are programmed to their fastest here, resulting in good efficiency (83%), but also generating excessive high frequency ripple. Figure 3 shows the same waveforms with the slew rates reduced. The large high frequency transients have been eliminated.

 LTC and LT are registered trademarks of Linear Technology Corporation.



4/98/178

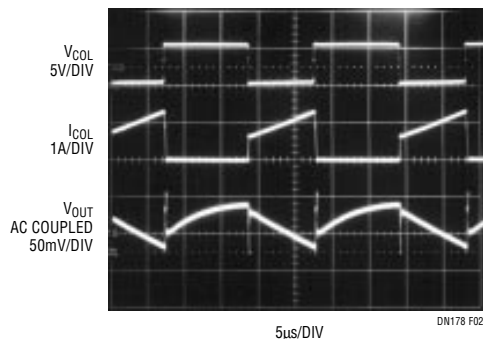


Figure 2. High Slew Rates ($R_{CSL} = R_{VSL} = 4k$) Result in Good Efficiency But Excess High Frequency Ripple

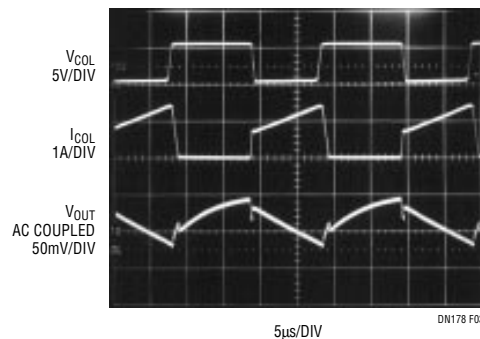


Figure 3. Low Slew Rates ($R_{CSL} = R_{VSL} = 24k$) Result in an Output Without Troublesome High Frequency Transients

Low Noise Bipolar Supply

Many high performance analog systems require quiet bipolar supplies. This circuit (Figure 4) will generate $\pm 5V$ from a wide input range of 3V to 12V, with a total output power of 1.5W. By using a 1:1:1 transformer, the primary and secondary windings can be coupled using capacitors C2 and C3, allowing the LT1534 to control the switch transitions at the output rectifiers as well as at the switch collector. Secondary damping networks are not required.

Additional LT1534 Features

The LT1534 is a complete, low noise switching regulator with an internal 2A power switch, packaged in a 16-lead narrow plastic SO. The current mode architecture provides

fast transient response and cycle-by-cycle current limit. Undervoltage lockout and thermal shutdown provide further protection. The large input range (2.7V to 23V) and high switch voltage (25V), combined with a 12 μA shutdown mode, result in a very flexible part suitable for battery-powered operation. The LT1534 can directly regulate either positive or negative output voltages.

The LT1533, closely related to the LT1534, provides two slew rate-controlled 1A power switches. Optimized for push-pull topologies, the LT1533 provides even greater opportunity for reducing DC/DC converter noise. For further applications, consult the LT1533 and LT1534 data sheets and Linear Technology's Application Note 70.

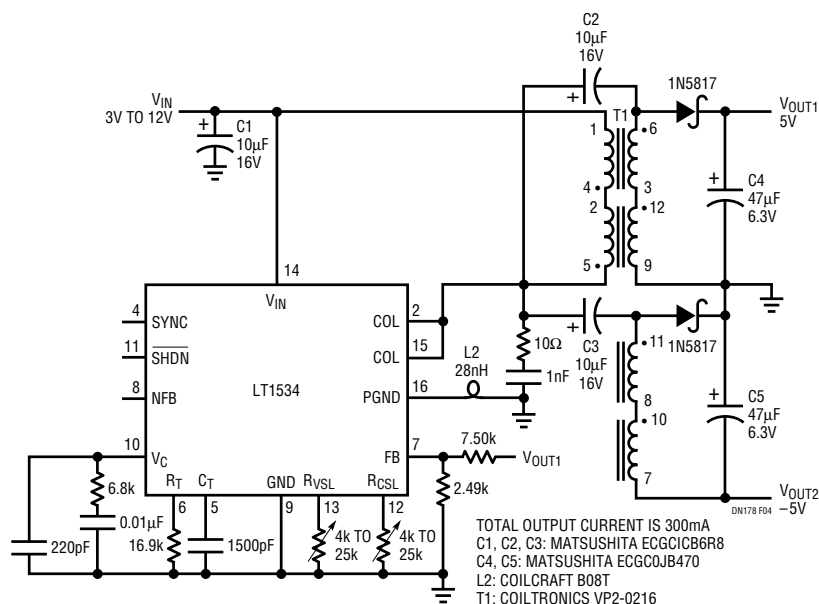


Figure 4. A Low Noise, Wide Input Range $\pm 5V$ Supply

For literature on our Switching Regulators, call **1-800-4-LINEAR**. For applications help, call (408) 432-1900, Ext. 2361

Linear Technology Corporation

1630 McCarthy Blvd., Milpitas, CA 95035-7417 • (408) 432-1900
 FAX: (408) 434-0507 • TELEX: 499-3977 • www.linear-tech.com

dn178f LT/TP 0498 370K • PRINTED IN THE USA

LINEAR
 TECHNOLOGY
 © LINEAR TECHNOLOGY CORPORATION 1998